

For reservations contact
1-877-444-6777
or visit recreation.gov

Visitors can participate in a wide variety of recreational activities at Rooks Park. The 18-acre park includes a reservable picnic shelter, sand volleyball court, playground, horseshoe pit, group fire rings, picnic sites with tables, BBQ grills and ADA-accessible restrooms. Large, open areas allow room for football and soccer games, while small secluded areas provide a quiet place to relax and enjoy the outdoors. The park is open daily from 7 a.m. until sunset. The entrance is open year-round to walk-in traffic, but seasonally closed to vehicles from October 15 to April 1, with reduced amenities in the park to accommodate winter conditions.

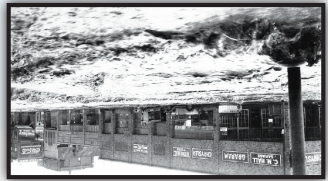
Rooks Park

Bennington Lake provides a place for people to get outdoors without having to get out of town. In the spring, water is diverted from Mill Creek to the lake after the risk of flooding has past. The Washington Department of Fish and Wildlife stocks the lake each spring with Rainbow Trout. Boating on the lake is limited to paddling, rowing, and wind-or electric-motor-powered vessels. This policy protects the lake from unwanted pollutants associated with gasoline-operated motors and provides maximum space for vessels compatible with the lake's small size. Picnic tables, shelters and restrooms are available at the lake parking lot. Park benches and shelters along the trails provide resting areas to enjoy views of the lake and the Blue Mountains. Hunting is permitted around Bennington Lake in the areas designated on the map.

Bennington Lake

More than 20 miles of recreation trails offer scenic views and wildlife-watching opportunities throughout the Mill Creek Dam and Bennington Lake areas. Trail surfaces vary from pavement, gravel or dirt. In 2012, the Department of the Interior designated the trail system on the south side of Mill Creek and around Bennington Lake as a National Recreation Trail.

Trails



In 1992, the reservoir was officially named Virgil B. Bennington Lake. Development of the Mill Creek Dam system was authorized in the 1938 Flood Control Act. The improved Mill Creek channel and off-stream storage reservoir were completed in 1942. In the early 1900's public concern about the frequent flooding of Walla Walla prompted Virgil B. Bennington, then-president of the Walla Walla Chamber of Commerce, to lobby the U.S. Congress for flood protection.

History

Regulations

To help ensure a safer, more enjoyable experience while visiting Mill Creek Dam, Bennington Lake and Rooks Park, please note some important rules:

- Fires are permitted only within designated grills or rings.
- Use of fireworks, projectile devices and paintball guns are not permitted.
- Overnight camping is not permitted.
- Boats with gasoline-operated motors may not be used on Bennington Lake.
- Alcoholic beverages are not permitted.
- Pets must be leashed at Rooks Park and on the north levee trail along Mill Creek levee.
- Motor vehicles must remain on designated roadways and parked in designated parking spaces only.

The complete rules and regulations governing public use of Corps water resource development projects are available on bulletin boards and at the Mill Creek Office located on Reservoir Road.

milcreek@usace.army.mil
www.nww.usace.army.mil
www.facebook.com/milcreekdam

General Information

Rooks Park
Hours: 7 a.m. to sunset
Open to vehicle traffic from
April 1 - October 15
Open year-round to foot traffic

Bennington Lake
Hours: 5 a.m. to 10 p.m.
Open year-round

Phone Numbers
Mill Creek Dam Office
509-527-7160
Emergencies 911
Sheriff Non-emergency
509-527-3265

Mill Creek Office
3211 Reservoir Road
Walla Walla, WA 9936

MILL CREEK DAM Bennington Lake Rooks Park



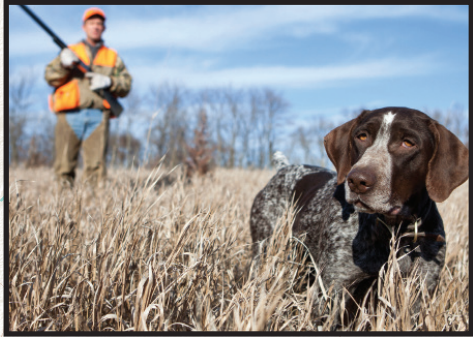
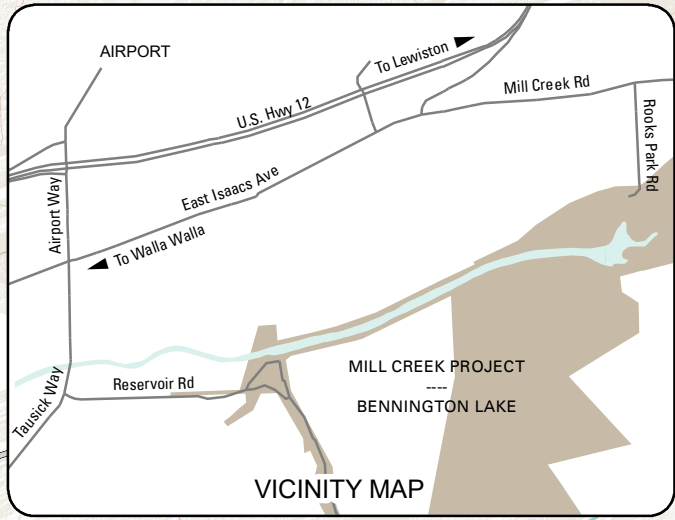
US Army Corps of Engineers
Walla Walla District



Mill Creek Trails



US Army Corps of Engineers
Walla Walla District



Hunting Rules

- Hunting season is from September 1 to January 31
- Shotgun and archery only
- Washington State Hunting Regulations Apply
- No target practice
- **Bright-colored clothing is recommended for all visitors during hunting season**

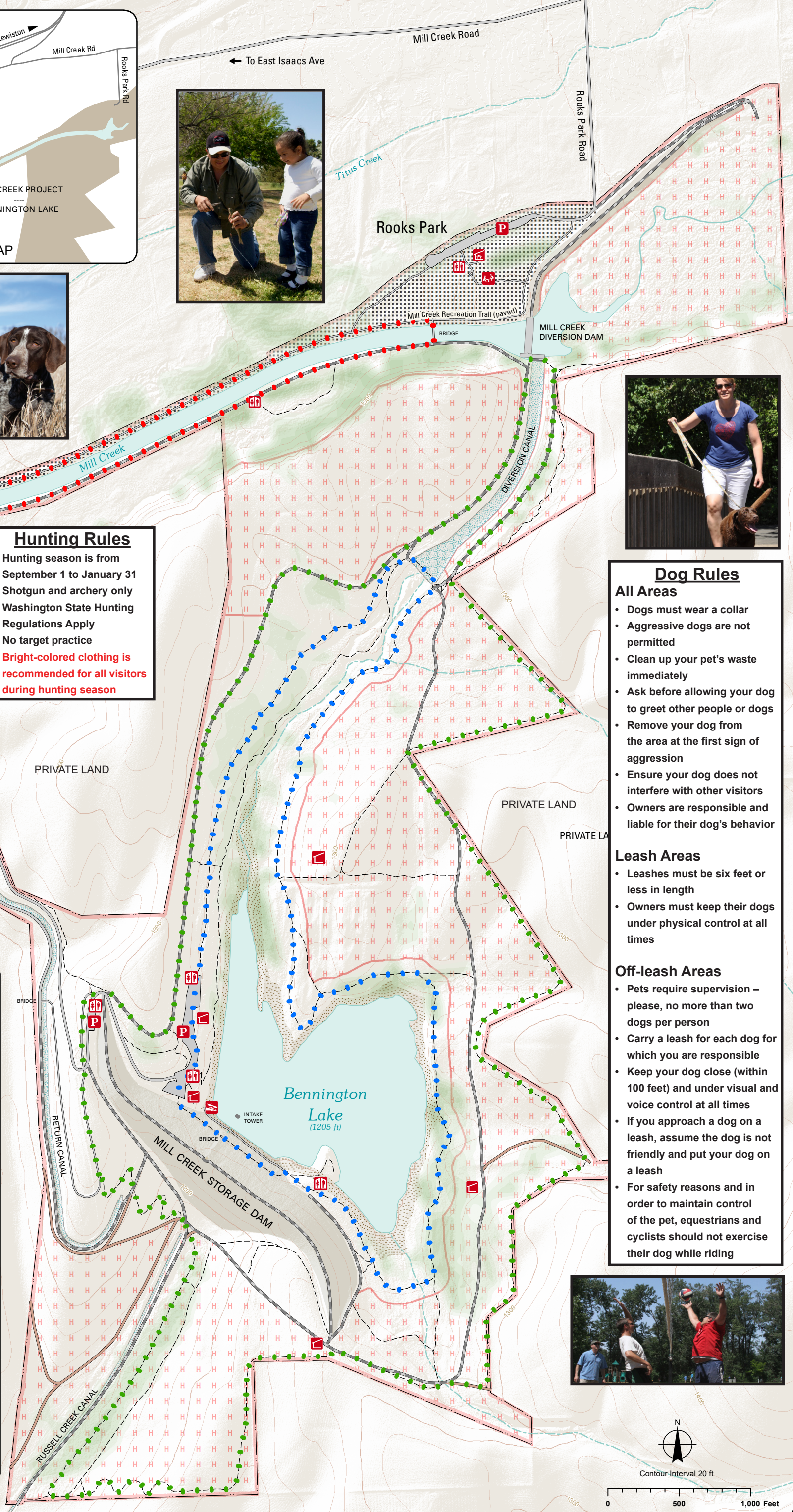
Dog Rules

- All Areas**
- Dogs must wear a collar
 - Aggressive dogs are not permitted
 - Clean up your pet's waste immediately
 - Ask before allowing your dog to greet other people or dogs
 - Remove your dog from the area at the first sign of aggression
 - Ensure your dog does not interfere with other visitors
 - Owners are responsible and liable for their dog's behavior

- Leash Areas**
- Leashes must be six feet or less in length
 - Owners must keep their dogs under physical control at all times

- Off-leash Areas**
- Pets require supervision – please, no more than two dogs per person
 - Carry a leash for each dog for which you are responsible
 - Keep your dog close (within 100 feet) and under visual and voice control at all times
 - If you approach a dog on a leash, assume the dog is not friendly and put your dog on a leash
 - For safety reasons and in order to maintain control of the pet, equestrians and cyclists should not exercise their dog while riding

- Kingfisher Trail
1.7 Miles - Easy - Flat
(Paved or Gravel)
- Meadowlark Trail
2.6 Miles - Moderate
Flat to Gentle (Dirt)
- Whitetail Trail
4.8 Miles - Moderately Difficult
Gentle to Steep (Gravel and Dirt)
- Access Road
(Paved)
- Service Road
(Gravel or Dirt)
- Paved Trail
- Spur Trails
- Public Land Boundary
- Pet Control Areas
(Must be on Leash)
- Areas Open to Hunting
- Flood Control Structures
- Canals
(Subject to Inundation)
- Water
- Project Office
- Parking Area
- Restroom
- Mini Shelter
- Shelter (Reservable)
- Playground
- Boat Ramp



Contour Interval 20 ft

